

マーキュリー 日本語学院

Mercury Japanese Language Institute

School Information



□ College Preparatory Course

(1 year 6 month course, 2 year course)

To acquire the "practical Japanese skills
" necessary to realize each individual's dream

Practical Japanese language skills

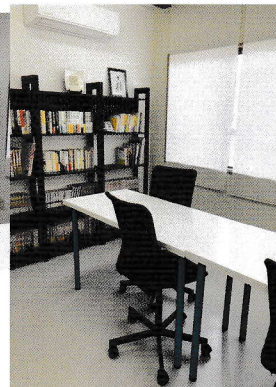
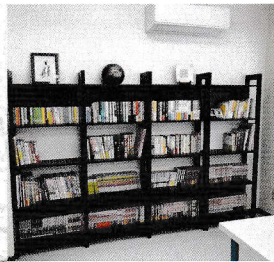
From the time you enter school until you graduate,
we will provide you with solid guidance for your life and career.
We will support you to pass the school of your choice.

◆Three features of our school◆

1 : Practical curriculum and lessons" for higher education

2 : Life and career guidance" to achieve goals

3 : Practice" through community problem-solving projects



To work with others as a true global human resource

To acquire "diverse values" and "fair judgment" to "work with others"
as a true global human resource

01

Develop basic skills

In our daily classes, we learn
students learn about vocabulary,
kanji in daily life situations.
conversation in daily life.
and conversation in daily life.
Japanese Language Proficiency
Test "N3" in the first year.



02

Develop the ability to apply

To correctly apply the Japanese
you have learned Japanese culture, customs,
and manners in order to correctly apply the
culture, customs, and manners.
Japanese culture, customs and manners.
Japanese culture, customs, and manners.
In the second year, students will be able to pass
the Japanese Language Proficiency Test (N2).
In the second year, students will be able to
pass the N2 Japanese Language Proficiency Test.



03

Develop practical skills

Aiming to solve local issues
In the project-based learning
Students will work together
with local people. In addition,
students will learn the "research skills"
necessary for higher education after graduation.
Research skills in addition, students
develop the three skills necessary for higher education
after graduation: the ability to research,
the ability to create, and the ability to communicate.
In addition, students will develop the three skills
necessary for higher education after graduation:
the ability to research, the ability to create,
and the ability to communicate.

☐ Annual School Events

<First Year/ Second Year>

Apr. Entrance Ceremony (April students) · Orientation · health checkup
 May Student Exchange Meeting
 Jun. Social Insight
 Jul. Personal Interviews · Japanese Language Proficiency Test
 Aug. ★summer vacation★
 Sept. Geographical Exchange Meeting · Personal Interviews
 ★autumn vacation★
 Oct. Entrance Ceremony (October students) · Orientation · health checkup
 speech contest
 Nov. Social Insight
 Dec. Personal Interviews · Japanese Language Proficiency Test
 ★winter vacation★
 Jan. sports competition
 Feb. study presentation
 Mar. Personal Interviews · Graduation/completion ceremony
 ★spring vacation★



☐ Class hours

Morning Class

1st period 8:40 ~ 9:30
 2nd period 9:40 ~ 10:30
 3rd period 10:40 ~ 11:30
 4th period 11:40 ~ 12:30

Afternoon Class

1st period 13:10 ~ 14:00
 2nd period 14:10 ~ 15:00
 3rd period 15:10 ~ 16:00
 4th period 16:10 ~ 17:00

☐ tuition fee

screening fee ¥25,000

1 year 6 month course

<First Year>	<Second Year>
Total ¥767,450	Total ¥372,550
(Tax excluded)	(Tax excluded)

itemization

Entrance fee : ¥50,000

Tuition fee : ¥580,000 ¥290,000

Other : ¥112,450 ¥82,550

<Fees for teaching materials, extracurricular activities,
 medical examinations, visa renewal fees
 JLPT examination fee, casualty insurance fee, etc.>

2 year course

<First Year>	<Second Year>
Total ¥773,550	Total ¥696,950
(Tax excluded)	(Tax excluded)

itemization

Entrance fee : ¥50,000

Tuition fee : ¥580,000 ¥580,000

Other : ¥118,550 ¥116,950

<Fees for teaching materials, extracurricular activities,
 medical examinations, visa renewal fees
 JLPT examination fee, casualty insurance fee, etc.>

☐ Living and Working in Kitakyushu

Kitakyushu City is a very comfortable place to live, with low prices and good security. Although it varies from person to person, it is possible to live on about 20,000-40,000 yen per month in addition to housing costs. With the permission of the school and the Immigration Bureau You can work part-time within 28 hours per week.

☐ Environment

Mojiko Retro and other areas where you can feel the beautiful history and culture of Japan.



☐ Access

Nearest station

From Mojiko Station on JR Line

10 minutes walk



☐ Contact

Mercury Japanese Language Institute

〒801-0851

1-4-11 Higashihonmachi, Moji-ku,
Kitakyushu-shi, Fukuoka Japan

TEL: 093-322-5200

FAX: 093-322-5200

Email: mercuryjapan18@gmail.com